

240 Edwards Street, SE
Cleveland, Tennessee 37311
Tel: 423-472-3333
Fax: 423-478-6710

INSTALLATION INSTRUCTIONS

ELECTRIC COUNTER MOUNTED SURFACE UNITS

IMPORTANT: PLEASE KEEP FOR THE USE OF THE LOCAL ELECTRICAL INSPECTOR

READ SAFETY PRECAUTIONS IN CARE AND USE BOOK BEFORE USING UNIT

In order to assure the best results in service, proper operation and maximum efficiency, the original installation and adjustment should be made by your dealer, his authorized agent, or by your local utility company before you attempt to operate the surface unit.

LOCATION

Place unit where it will be well lighted. For proper cooking results, it must be level. **THESE ELECTRIC COUNTER MOUNTED SURFACE UNITS ARE APPROVED FOR INSTALLATION IN COMBUSTIBLE CABINETS. SEE INSTALLATION DIAGRAM FOR THE APPROPRIATE UNIT ON THE FOLLOWING PAGES OF THIS INSTRUCTION SHEET.**

OUTSIDE WIRING

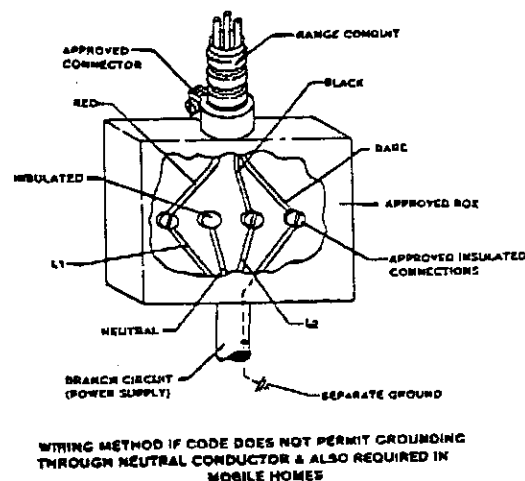
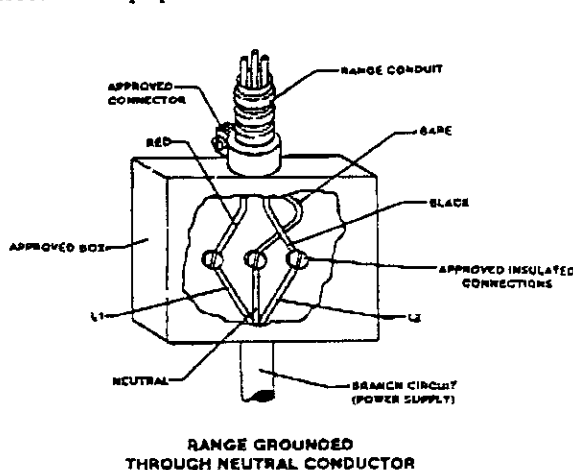
Your local utility company will tell you whether the present electric service to your home is adequate. It may be necessary to increase the size of the wiring to the house and service switch to take care of the electrical load demanded by the surface unit and/or oven. The wattage (K.W. rating) load for the surface unit is specified on the name plate on the unit.

HOUSE WIRING

Most local Building Regulations and Codes require that all electrical wiring must be done by licensed electricians. All wiring would conform to Local or National Electrical Codes. This unit requires a single phase three wire 120/240 or a 120/208 volt, 60 Hz, AC branch circuit. The flexible armored conduit supplied with the unit must be connected to an approved electrical junction box by means of an approved conduit to box connector.

THE BARE WIRE IN THE UNIT CONDUIT IS CONNECTED TO THE FRAME OF THE UNIT. THE FRAME OF THE UNIT IS GROUNDED TO NEUTRAL OF THE BRANCH CIRCUIT ONLY WHEN THIS BARE WIRE IS CONNECTED TO THE NEUTRAL (WHITE) WIRE OF THE BRANCH CIRCUIT. If used in a MOBILE HOME or if LOCAL CODE does not permit grounding through the neutral conductor, the bare wire at the end of the unit conduit must be used to ground the unit in accordance with local code. The red and black wires must be connected to two conductors (red and black) of the branch circuit. The Neutral (white) wire of the branch circuit must be properly insulated. Connect all wires to the branch circuit with approved connectors. Use only COPPER wire for the branch circuit.

WARNING - Be sure unit is DISCONNECTED from POWER SUPPLY before examining any of the electrical equipment.



240 Edwards Street, SE
Cleveland, Tennessee 37311
Tel: 423-472-3333
Fax: 423-478-6710

Units shown in Figures 1 and 2 may be installed in combustible countertop and must be spaced at least 1" from combustible sides and rear wall above countertop.

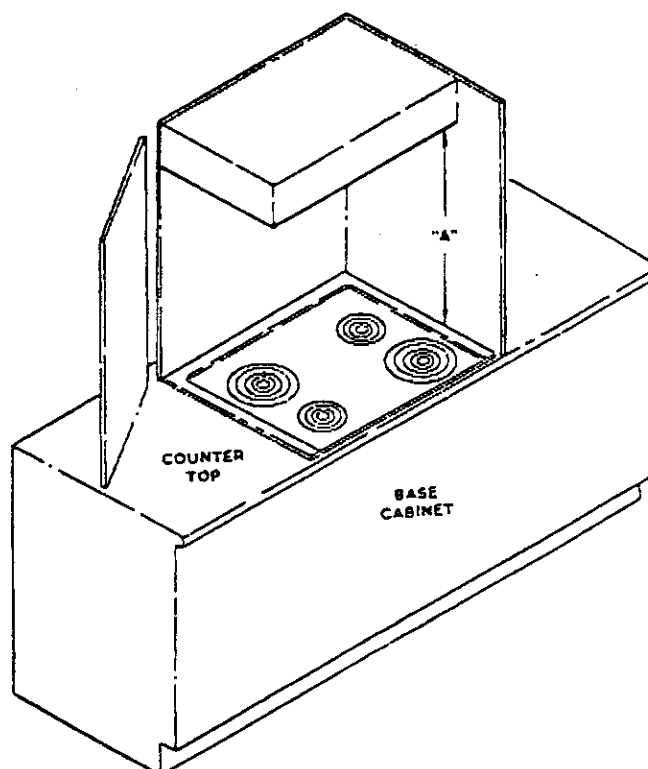
Units shown in Figures 3 and 4 may be installed in combustible countertop and adjacent to 0" from combustible sides and rear wall above countertop.

Dimension "A" = 30 inches minimum clearance between top of the cooking surface and the bottom of an unprotected wood or metal cabinet, OR:

Dimension "A" - 24 inches minimum when bottom of wood or metal cabinet is protected by not less than 1/4" flame retardant millboard covered with not less than No. 28 MSG sheet steel, .015 inch stainless steel, .024 inch aluminum or .020 inch copper.

To eliminate the hazard of reaching over heated surface units, cabinet storage space located above the surface units should be avoided. If cabinet storage is to be provided, the hazard can be reduced by installing a range hood that projects horizontally a minimum of 5 inches beyond the bottom of the cabinets.

CAUTION: Some cabinets and building materials are not designed to withstand the heat produced by the normal safe operation of a listed appliance. Discoloration or damage, such as delamination may occur.



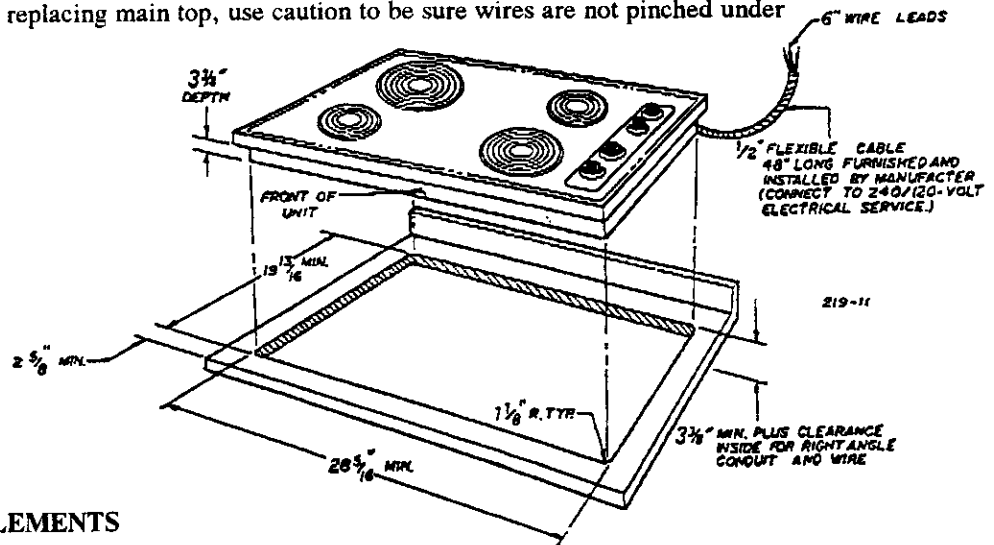
240 Edwards Street, SE
 Cleveland, Tennessee 37311
 Tel: 423-472-3333
 Fax: 423-478-6710

30" COOKTOP WITH COIL ELEMENTS

If cooktop is to be secured to countertop, remove main top and attach burner box to countertop at four (4) corners.

To remove main top from burner box, remove all four (4) surface units and drip bowls. Remove the four (4) mounting screws from main top. (Tabs on side of element openings). CAUTION: Do not remove green ground wire from main top. When replacing main top, use caution to be sure wires are not pinched under switch shield.

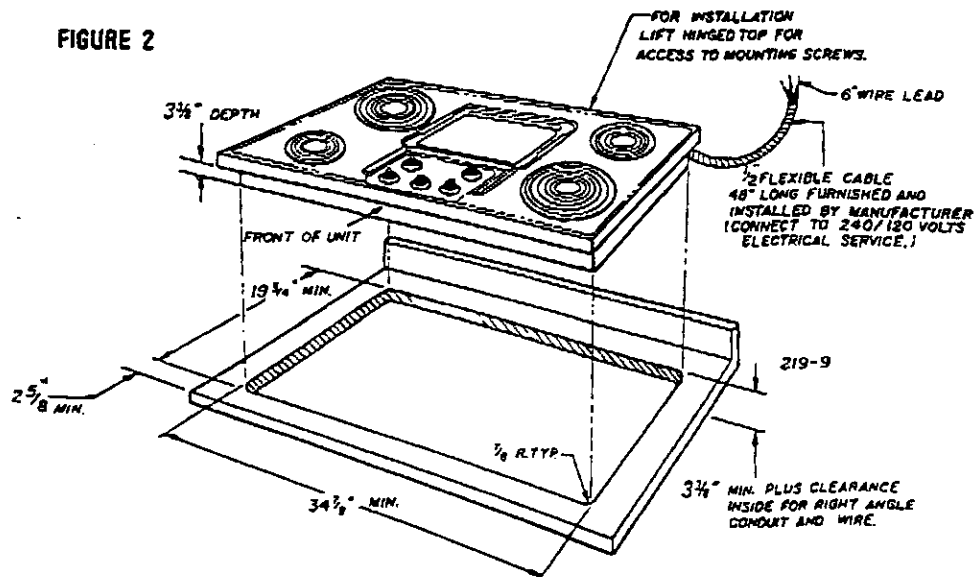
FIGURE 1



36" COOKTOP WITH COIL ELEMENTS

If cooktop is to be secured to countertop, lift the hinged main top. Attach the burner box to countertop at four (4) corners.

FIGURE 2



240 Edwards Street, SE
Cleveland, Tennessee 37311
Tel: 423-472-3333
Fax: 423-478-6710

30" GLASS COOKTOP WITH SOLID ELEMENTS

INSTRUCTIONS TO APPLY FOAM TAPE

1. Remove the glass top unit from the carton and place it upside down over two soft pads making sure control knobs do not interfere with any surface.
2. Peel off the backing paper from the foam gasket provided with the unit and stick the adhesive backed tape to the glass along its edge. Install cooktop.

FIGURE 3

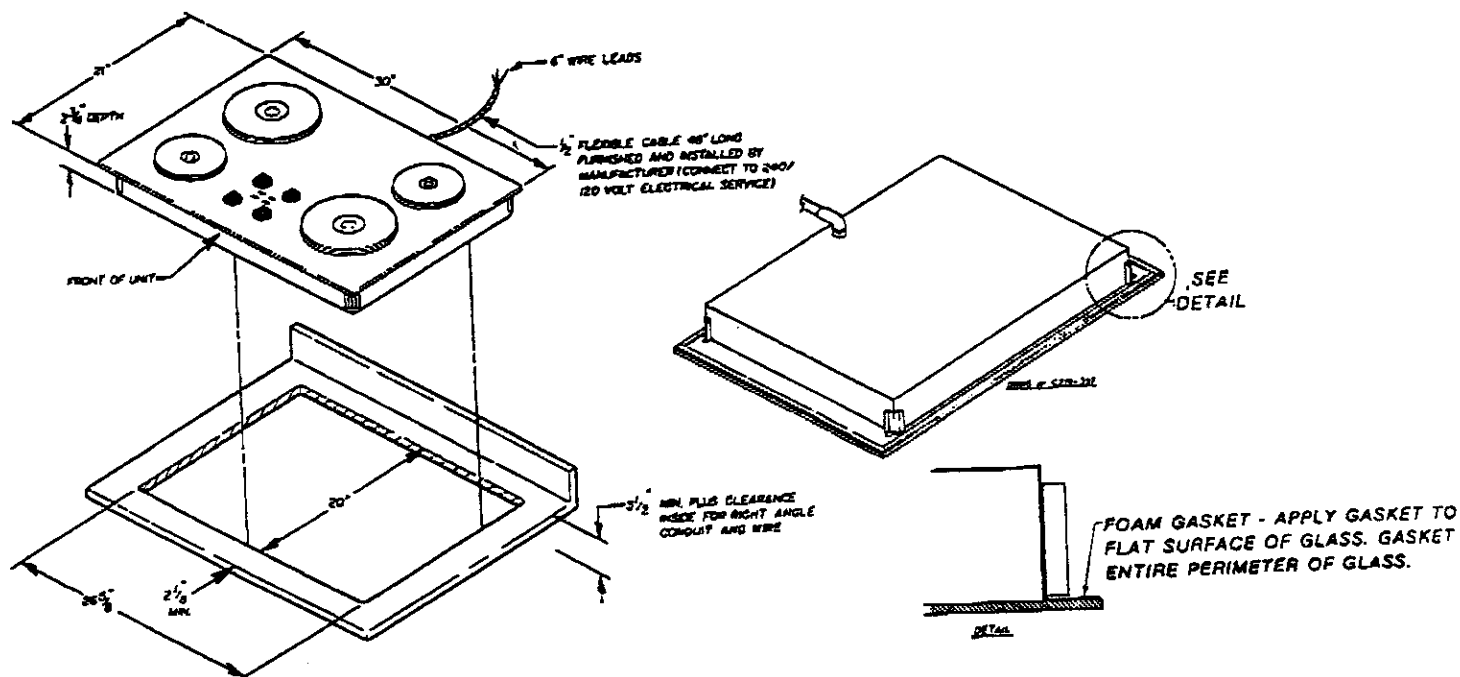


FIGURE 4

